

**ENERGY KINETICS
JUMPS FAR AHEAD
of old fashioned
tankless coil
technology!**

INTRODUCING . . .

Ascent™

Combi boiler by Energy Kinetics

**Simple technology that cuts the
high fuel bill of tankless coil boilers
by up to 20% or more!**

UP TO
87%
AFUE



SHOWN
WITH OPTIONAL
SILENT BURNER
COVER

Exceptional Benefits:

- **Proven** 30 year boiler!
- **Whisper quiet with silent burner cover – no need to turn up the TV!**
- Combined heat and hot water in one boiler with *hot water priority!*
- **Replaces 2, 3 and 4 section oil boilers!**
- **Lifetime Limited Warranty**

For high flow showers, fast fill tubs, higher efficiency and more fuel savings, or if you currently have a hot water tank, ask about our other great Energy Kinetics products! (See back cover.)

**Plus! Your family
enjoys peaceful quiet
thanks to our
boiler design – and,
with the silent burner
cover, Ascent is more
quiet than a small
microwave oven!**

**Other boilers are 30
times noisier!**

**Cuts up
to 20% or
more off
fuel bills!**

The Ascent Combi is ready 24/7, just like conventional tankless coil boilers, but because of its unique design and plate heat exchanger, it can cut your energy bill by up to 20% or more.

There's no tankless coil boiler that can compare for energy savings, quietness, and hot water delivery.

And for even greater savings, you can select a smart learning mode or on demand operation at the touch of a button.

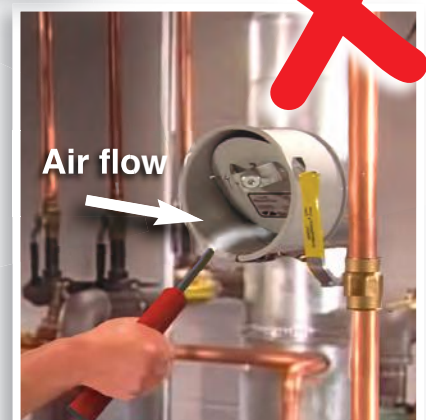
If you don't use hot water overnight during the summer months, your boiler doesn't have to run!

It's so smart, it can learn your weekly routines and be ready when you usually need hot water and save energy when you don't.

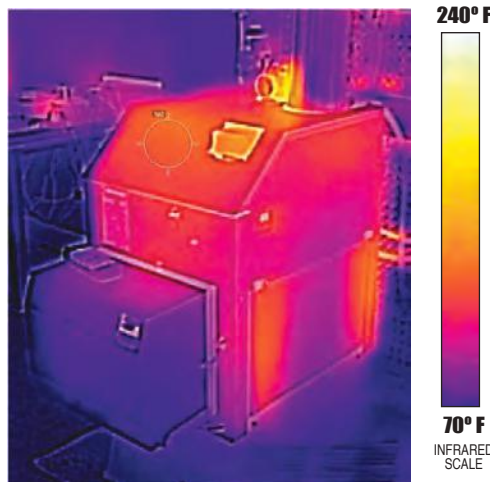
There are more boilers sold in the USA (and world-wide) with plate heat exchangers than with tankless coils! Plate heat exchangers **deliver more hot water** and they **don't have coil flanges that leak**.



Tankless coil boilers typically fail at the coil flange or cast iron sections. **Ascent has no coil flange or cast iron sections.**



Tankless coil boilers waste fuel through draft regulators. **Ascent has no draft regulator.**



Infrared doesn't lie! Shown at left, Ascent sends more heat into your home. Shown at right, a tankless coil boiler wastes heat and energy through jacket loss.

These additional design and engineering features help Ascent easily out-perform old fashioned tankless coils.

The energy converter is a **proven 30 year spiral design** for the highest efficiency. There are no sections or pins to foul, clean, or leak.

Removable stainless steel alloy combustion chamber for **clean burning operation**.

Hefty 2 inch thick insulation wrap for high efficiency and quiet operation.

Swing down door for easy accessibility.

Ascent Hydrostat™ for hot water comfort and efficiency that **outperforms tankless coils**.

Silent burner cover combined with our spiral boiler design delivers **whisper quiet operation**.

Built in stand keeps Ascent off the cold floor.



Hard water? Add a scale stopper for reliable operation (up to 25 grains of hardness) without cleaning!



High performance mixing valve for consistent hot water temperature (CIP).

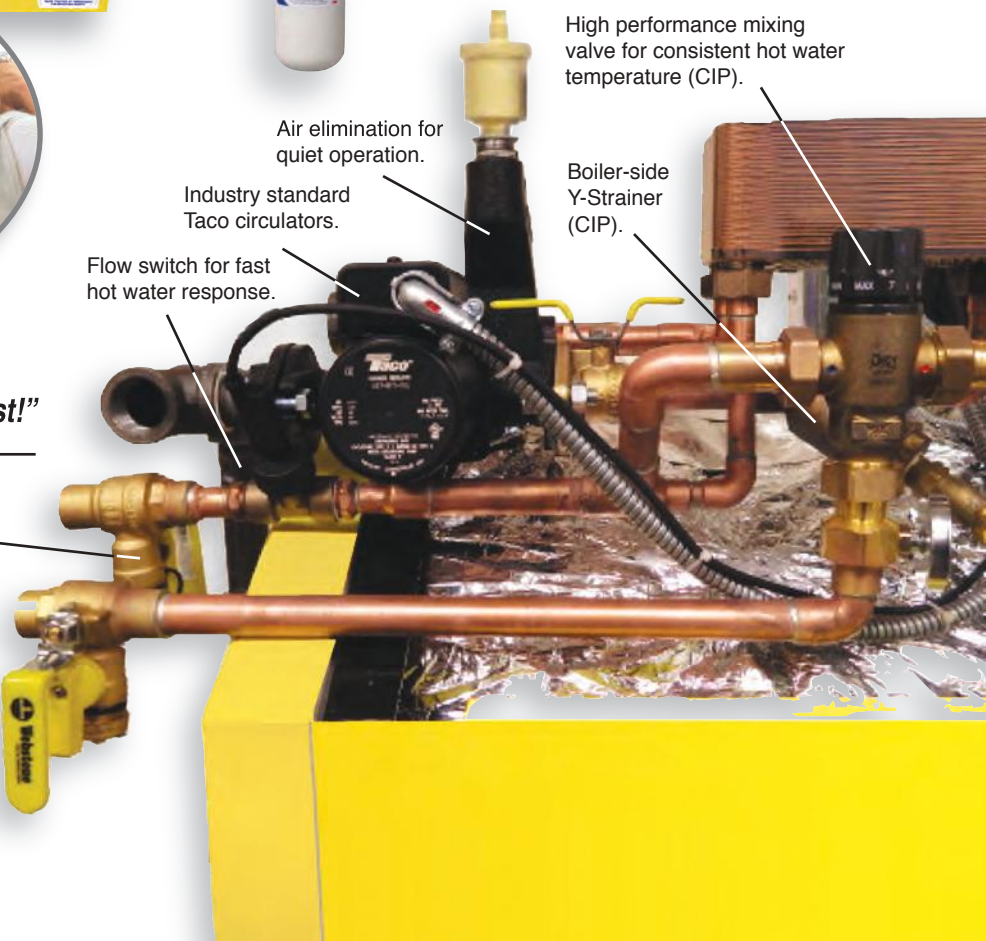
Boiler-side Y-Strainer (CIP).

Air elimination for quiet operation.

Industry standard Taco circulators.

Flow switch for fast hot water response.

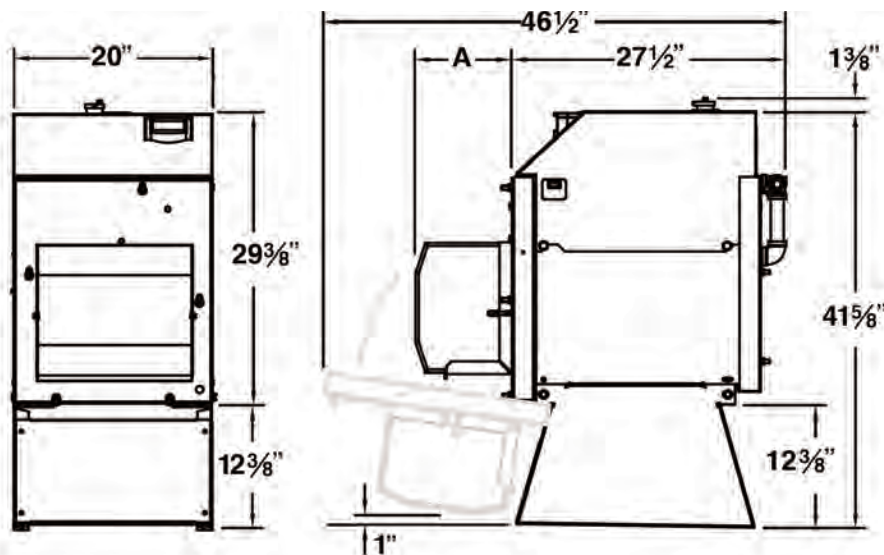
Clean In Place (CIP) valves for the plate heat exchanger and mixing valves.



"Enjoy whisper quiet Ascent, and leave old tankless coil problems in the distant past!"

Ascent™
Combi boiler by Energy Kinetics

Ascent Combi Model EK1T Installation Dimensions



Recommended service clearance: 20" from front door face, 5" left and right sides. Clearance to combustibles: 4" from the rear cover; 10" above top cover; 9" from flue pipe; 0" for all the other dimensions.

Included (factory piped and assembled): ASSE mixing valve, boiler base, blocked vent safety switch, dynamic air elimination manifold, ON/OFF switch and junction box, 3/4" drain valve, plate heat exchanger and combi hot water assembly, hydronic Y-strainer, circulator flanges, door safety switch.

Included (field install):

Clean in place valves, relief valve, hydronic circulator (wiring included).

Draft regulator not required or recommended due to advanced combustion chamber.

Ascent Combi Model EK1T Specifications

Oilheat home heating system

Input	Gross output	AFUE	Hot water*
.85 GPH	104,000 BTU/HR	87%	2.7 GPM
1.00 GPH	121,000 BTU/HR	86%	3.1 GPM
1.25 GPH	149,000 BTU/HR	85%	3.8 GPM

Natural gas / propane home heating system

Input	Gross output	AFUE	Hot water*
120,000 BTU/HR	103,000 BTU/HR	86%	2.7 GPM
150,000 BTU/HR	128,000 BTU/HR	85%	3.3 GPM
175,000 BTU/HR	147,000 BTU/HR	84%	3.8 GPM

*Domestic hot water rating based on 77° rise. Not for comparison with tankless boiler ratings.

"Tankless coil ratings *overstate* hot water delivery. They use a misleading short five minute flow test. They just can't keep up with Ascent's continuous flow."

Ascent Combi Model EK1T

Weight	315 lbs.
Water Content	3 gallons
Air Inlet Pipe Size*	3" PVC
Boiler Flue Outlet†	5"
Hydronic Supply	1"
Hydronic Return	1"
Hot Water Supply	3/4"
Hot Water Make-up	3/4"
Bypass Circulator	Taco 007
Hydronic Circulator	Taco 007

* Reduce to 2" PVC for up to 20' plus five elbows
† 6" recommended for 1.25 GPH firing rate

Dimension "A" See drawing at left

Burner	W/O Cover	With Cover
Carlin EZ-1	9"	9.5"
Beckett AFG	8"	9.5"
Riello 40F5	13"	N/A
Carlin EZ-Gas	14.5"	15.25"



For high flow showers, fast fill tubs, higher efficiency and more fuel savings, or if you currently have a hot water tank, ask about these great Energy Kinetics products



Exceptional residential lifetime limited warranty!
See actual warranty for details.



Better heating, bigger savings from the Energy Kinetics family of products.

Energy Kinetics / System 2000®

51 Molasses Hill Road, Lebanon, NJ 08833
(800) 323-2066 Fax (800) 735-2068

visit www.energykinetics.com

®The color yellow for heating boilers is a registered trademark of Energy Kinetics.



As an ENERGY STAR® Partner, Energy Kinetics has determined model EK-1T meets ENERGY STAR® guidelines for energy efficiency for oil heat input .85 GPH.